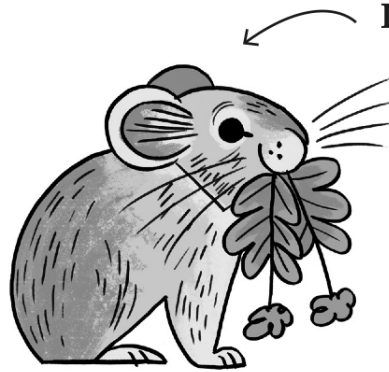


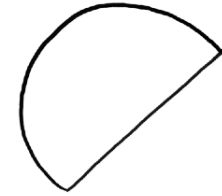


DRAW WITH A PARK RANGER



Let's draw this pika!

1



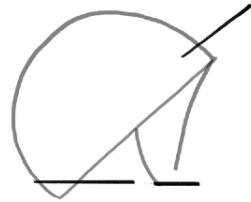
Start out with a simple half-moon shape. Try to draw lightly for now. We're going to draw over this at the end!

2



Next, draw two lines for the front leg.

3



Draw three straight lines for the bottom of the pika's feet and for the bottom of its head.

4



Draw a big curved line for the top of the head. Draw smaller curves for the top of the feet.

5



Draw two circles: one for the pika's ear and one for its mouth.

6



Add a circle for the eye, a half-circle for the other ear, and a straight line for the bottom of the head.

7



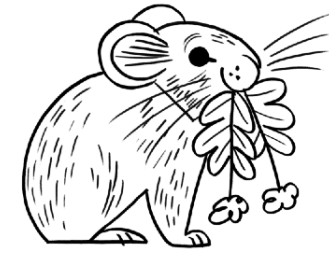
Add a few more details, then draw a couple of long lines for the flowers in the pika's mouth.

8



Draw some squiggly shapes for leaves and flowers. Add as many as you'd like!

9



Draw over your light lines. Give your pika some fur, and color it in if you'd like!